



1 Louth Road
Holton le Clay, Holton le Clay, DN36 5HN

£675,000

Land (Residential)

- Freehold
- For Sale
- Former Scrap Yard
- 4 Bed Detached House
- Planning for 9 Houses/3 Industrial Units
- Planning Reference N/085/01415/21
- 1Ha (2.5 Acres)
- Vacant Possession
- EPC Exempt - House to be demolished

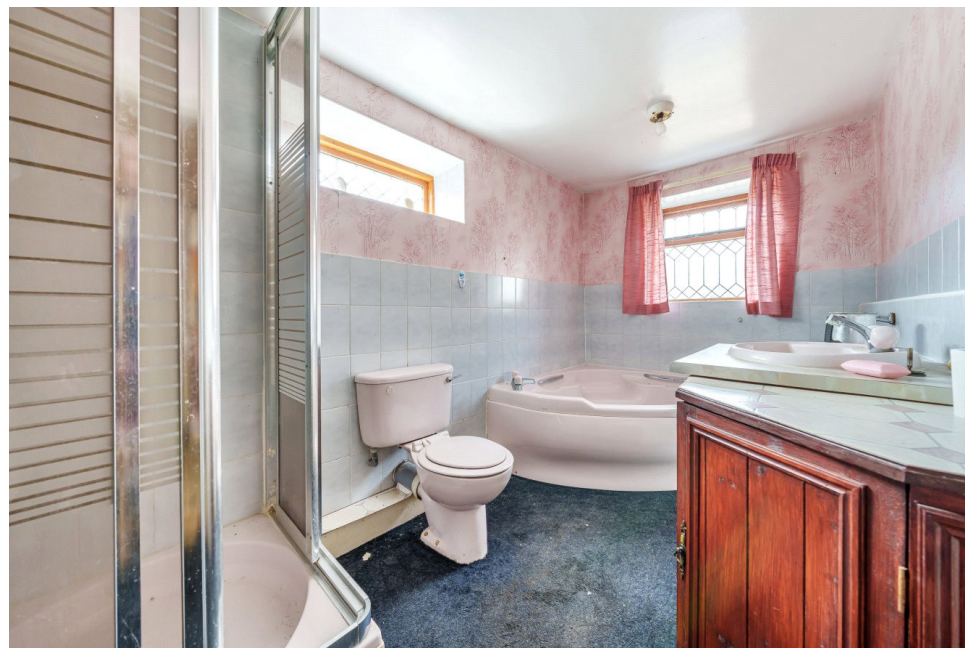


Overview



An excellent opportunity to purchase a mixed development site with Outline Planning Permission for the erection of 9 dwellings and 3 light industrial/B1 units granted in September 2021. The site was formerly used as a scrap metal business and includes a house with a number of buildings on a total land area of 1 Ha (2.5 Acres).

The property is situated on the outskirts of the village of Holton Le Clay. The village has a number of local amenities including doctors surgery, public house, pharmacy and primary school. The village is located 5 miles south of Grimsby and 9 miles north of Louth and has easy access onto the A16 main road.






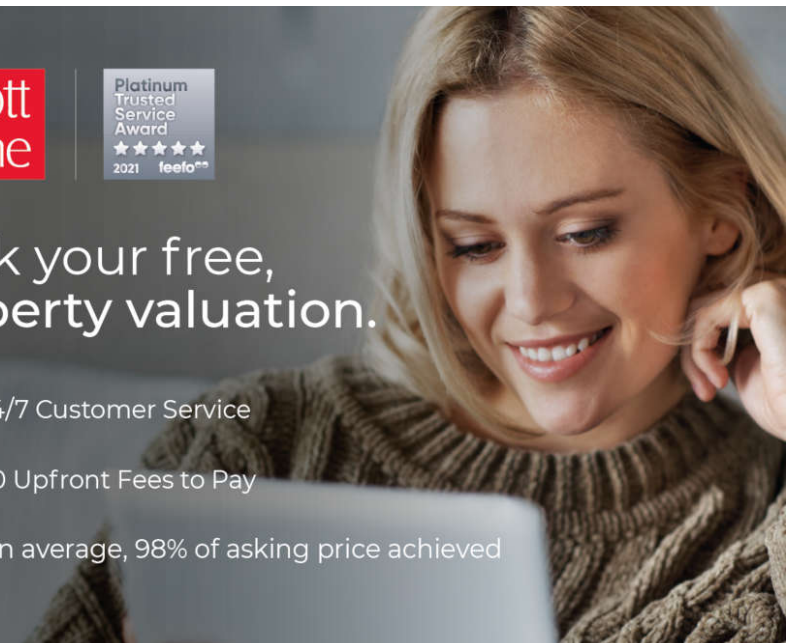




Book your free, property valuation.

-  24/7 Customer Service
-  £0 Upfront Fees to Pay
-  On average, 98% of asking price achieved



Location



Show on Google: [schools](#), [doctors](#), [supermarkets](#), [restaurants](#), [railway stations](#)



Stonebow
Financial Services Ltd

Do you need Financial Help or Advice?

We are offering free advice through Mortgage Advice Bureau. If you would like to discuss your finances or mortgage, we'll arrange for a qualified adviser to call you back at a convenient time.



Dave Jolley
Mortgage & Protection Adviser

0330 912 0007

Your home may be repossessed if you do not keep up repayments on your mortgage.

There may be a fee for mortgage advice. The actual amount you pay will depend upon your circumstances. The fee is up to 1% but a typical fee is 0.3% of the amount borrowed.

Houses. Homes. Harmony.



1 Louth Road, Holton le Clay
is on the market with our Grimsby branch

22 South St Mary's Gate, Grimsby DN31 1LQ

01472 264960