

Tonwell Tower
Temple Lane
Tonwell
Near Ware
Hertfordshire
SG12 0HP



3 Bedrooms



3 Bath/Shower Rooms



2 Reception Rooms



Ample parking



Rooftop terrace and lift

Guide Price £375,000

 **ashtons**
for life's great moves



Tonwell Tower, Temple Lane, Tonwell

Unique former water Tower with stunning 360 degree views and planning consent to create a breathtaking home with stunning features

🏠 2440 square feet of accommodation

🏠 Central lift and circular staircase

🏠 Ground floor Kitchen/living dining area

🏠 Magnificent third floor Drawing room with kitchenette

🏠 Three bedrooms all with en suite facilities

🏠 Beautiful roof garden

🏠 Spectacular countryside views

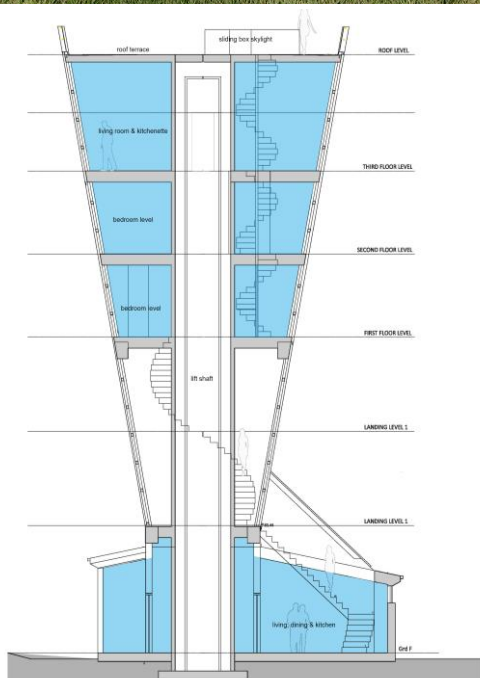
Description

A truly unique opportunity to purchase this iconic Grade II listed water tower that dominates the skyline in Tonwell, a small village just outside Ware and Hertford. The site has been granted planning permission to convert into a 3/4 bedroom tower house with central elevator and amazing roof terrace with stunning views. Accommodation extends to 2440 square feet in total over four floors with the ability to create some incredible living spaces and interior design. The current owners, King and Company are a property development and investment group and examples of other projects can be found at www.kingandcompany.co.uk. They have been working hard to get planning approved, the scheme is absolutely fantastic, truly a 'Grand design' and a team is in place to build the project for any applicant interested: Build cost to be discussed. Further information is available on request and the planning reference is 3/19/1838/LBC on the East Herts Planning site. Some CGI's included

Location

The property is situated in a semi rural position at the end of this quiet cul de sac and has ample parking and garden area. Tonwell is a small village with primary school and popular public house situated two miles to the west of Ware and east of Bengoe. Secondary schooling, extensive shopping amenities and main line rail services can be found in Hertford and Ware, both within 3 miles.





Important Information

These particulars do not constitute an offer or contract in whole or part. The statements contained herein are made without responsibility on the part of Ashtons or the vendors and they cannot be relied upon as representatives of fact. In respect of floor plans, these are for illustrative purposes only. The measurement and position of each element is approximate and must be viewed as such. Intending purchasers should therefore satisfy themselves by inspection or otherwise as to their correctness. The vendors do not make or give, and neither Ashtons nor any person in their employment has any authority to make or give, any representation or warranty whatsoever in relation to this property. We offer a wide range of services through third party providers including solicitors, surveyors, removal firms, mortgage providers and EPC suppliers. We receive additional payments for administering suppliers quoting software and making referrals. You are not under any obligations to use these services and it is your discretion whether you choose to deal with these parties or your own preferred supplier. You should be aware the average payment we received in 2018 equated to £38.00 per referral.

