



In brief

Cambridge 11 miles, Huntingdon 9 miles, A14 4 miles, Guided Busway (to Huntingdon and Cambridge, including the Science Park and Addenbrooke's Hospital/Biomedical Campus) 1 mile, (distances and time are approximate).

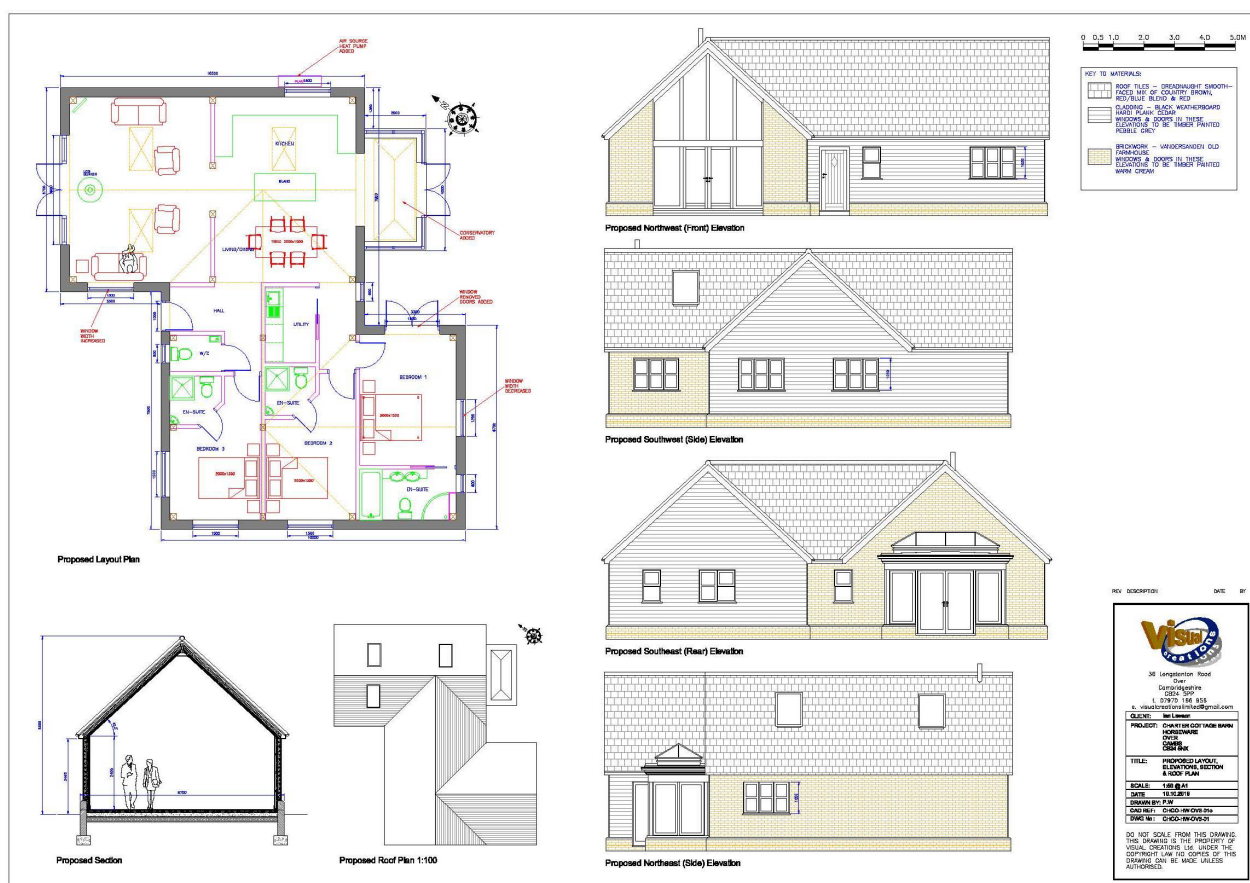
LAND ADJACENT TO CHARTER COTTAGE,

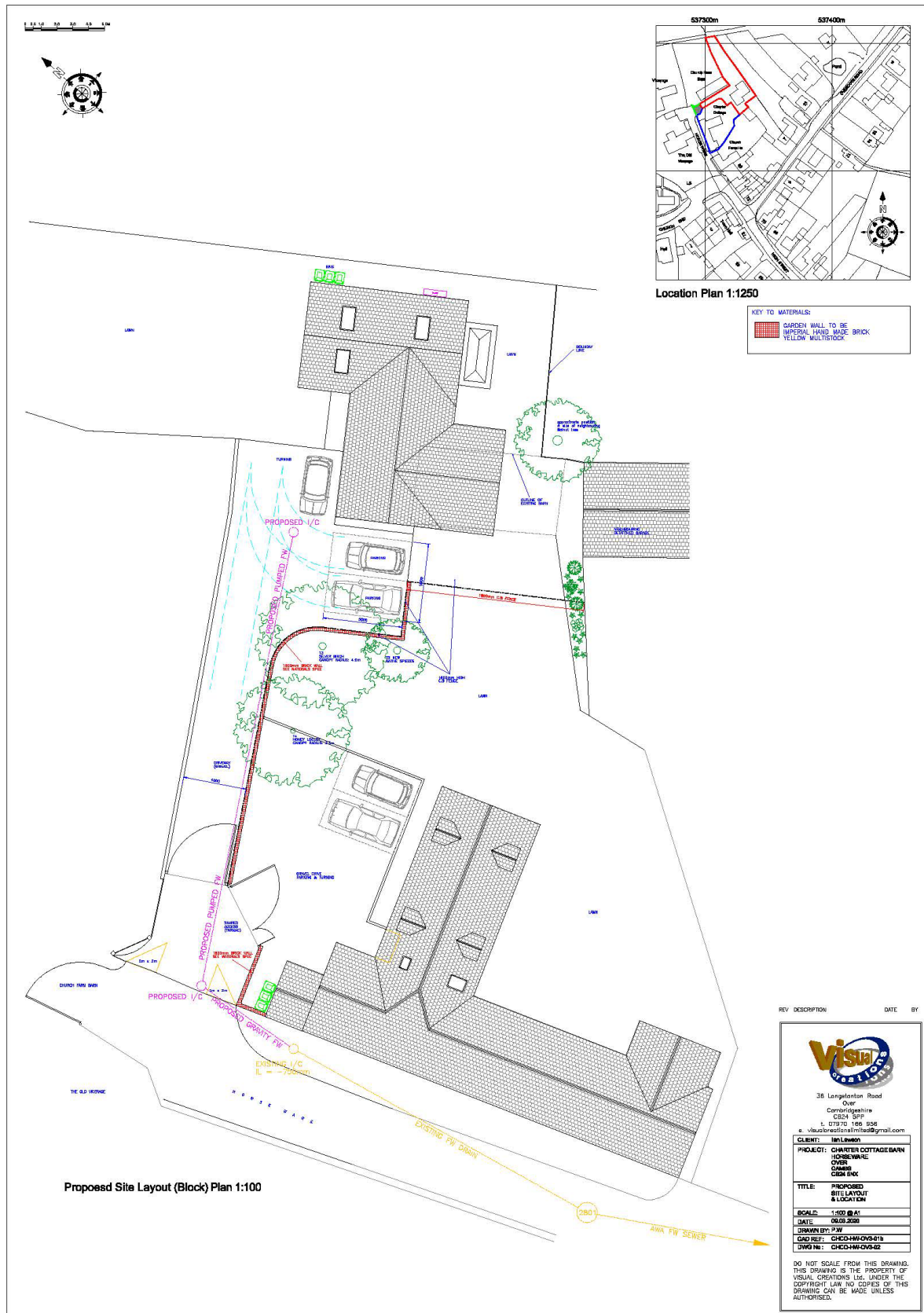
**HORSEWARE, OVER
£250,000 (GUIDE PRICE)**

The popular village of Over, situated between Huntingdon and Cambridge, benefits from a range of local facilities including a village store, hairdressers, church, community centre, recreation ground, sports and social club, public houses and a primary school. Secondary School education is available at Swavesey Village College (about 2 miles), an Academy school judged as 'Outstanding in every aspect' by Ofsted. The nearby University city of Cambridge is not only world renowned for its academic achievements but has also become a 'high tech' and 'bio tech' hub with the University Research and Development Laboratories, the internationally renowned Cambridge Science Park and Addenbrooke's

Description

The plot is situated on a no through road, close to the centre of this attractive west Cambridgeshire village. It will be accessed via a gated entrance with driveway and parking for several vehicles and has wonderful views onto open countryside. Measuring approximately 0.2 acre, the plot has the fantastic benefit of having full planning permission in place to build a single storey, 3-bedroom house. Copies of the planning permissions (Ref: S/1883/18/FL) are available upon request from Bidwells or via Cambridge City Council website www.cambridge.gov.uk and following the planning link.





Viewing

By prior telephone appointment with
Bidwells
01223 841842

Enquiries

Ollie Rivers
01223559854
ollie.rivers@bidwells.co.uk

54 High Street, Trumpington,
Cambridge, Cambridgeshire, CB2 9LS

Additional Information

Services

No services are currently connected to
the property.

Local Authorities

South Cambridgeshire District Council
0345 045 0500

Health & Safety

In the interest of Health and Safety,
please ensure that you take due care
when inspecting any property.



Important Notice

Bidwells LLP act for themselves and for the vendors of this property, whose agents they are, give notice that: Nothing contained in these particulars or their contents or actions, both verbally or in writing, by Bidwells LLP form any offer or contract, liability or implied obligation to any applicants, viewing parties or prospective purchasers of the property to the fullest extent permitted by law and should not be relied upon as statements or representative of fact. No person in the employment of Bidwells LLP or any joint agents has authority to make or give any representation or warranty whatever in relation to this property. Any areas of measurements or distances are approximate. The text, photographs and plans are for guidance only, may not be to scale and are not necessarily comprehensive. No assumptions should be made that the property has all necessary planning, building regulation or other consents. Bidwells LLP has not carried out a survey, nor tested the services, appliances or facilities. Purchasers must satisfy themselves by inspection or otherwise. All rentals and prices are quoted exclusive of VAT unless otherwise stated. Prospective purchasers may be asked to produce identification of the intended Purchaser and other documentation in order to support any conditional offers submitted to the vendors. Bidwells LLP accepts no liability of any type arising from your delay or other lack of co-operation. We may hold your name on our database unless you instruct us otherwise. OS licence no. ES 100017734. © Copyright Bidwells LLP 2018. Bidwells LLP is a limited liability partnership registered in England and Wales (registered number OC 344553). Registered office is Bidwell House, Trumpington Road, Cambridge CB2 9LD where a list of members is available for inspection. Your statutory rights are not affected by this notice.