



Open Storage Site - To Let

0.5 - 2.45 Acres (0.2 - 0.99 Hectares)

- Available Immediately
- Prominent Site
- 500m from Junction 29a M1

Open Storage Site - To Let

0.5 - 2.45 Acres (0.2 - 0.99 Hectares)

Location

The site forms part of the M1 Commerce Park at Markham Vale, Chesterfield, Derbyshire. The site is less than 500m from Junction 29a of the M1 and provides visibility running parallel along the M1 Motorway stretch.

Description

Open Storage site measuring approximately 2.45 acres. Fantastic opportunity fronting the M1 motorway with prominence. Junction 29a M1 approximately 500m from the site.

Site previously used for caravan storage and consideration will be given to the whole or plots of 0.5 acres or more.

Preference for taking the site as seen although the landlord will consider improvement/surfacing works depending on the covenant and lease term on offer.

Accommodation

DESCRIPTION	ACRES	HECTARES
Open Storage Site	2.45	0.99
TOTAL	2.45 ACRES	0.99 HECTARES

Terms

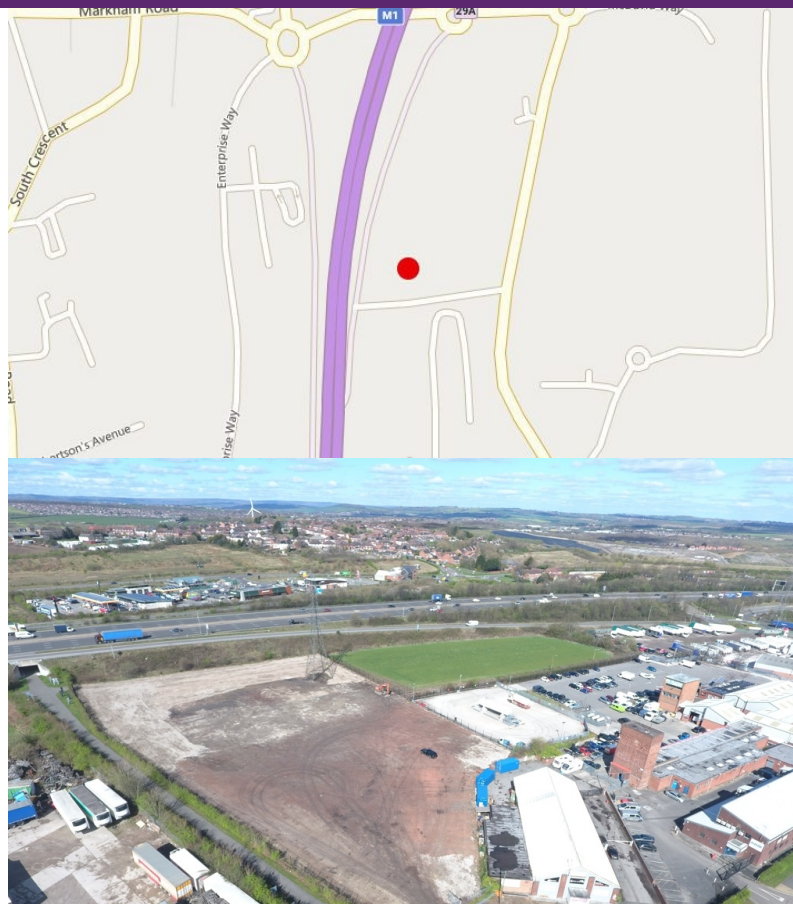
Quoting Terms - £50,000 pa / acre - Total site - £122,500 pa
Consideration will be given to smaller parcels of 0.5 acres+

VAT

All figures are quoted exclusive of VAT at the prevailing rate.

EPC Rating

EPC Available upon request



Anti-Money Laundering (AML)

To comply with AML Regulations, identification checks and confirmation of source of funding is required from any purchaser or lessee.

Legal Costs

Each party to bare their own legal costs in the transaction.

Further Information

For further information please contact the sole agents CPP
Mr Ed Norris MRICS
T: 0114 270 9160
M: 07711 319 339
E: ed@cppartners.co.uk
Mr Max Pickering MRICS
T: 0114 2738857
M: 07835 059363
E: max@cppartners.co.uk

March 2023